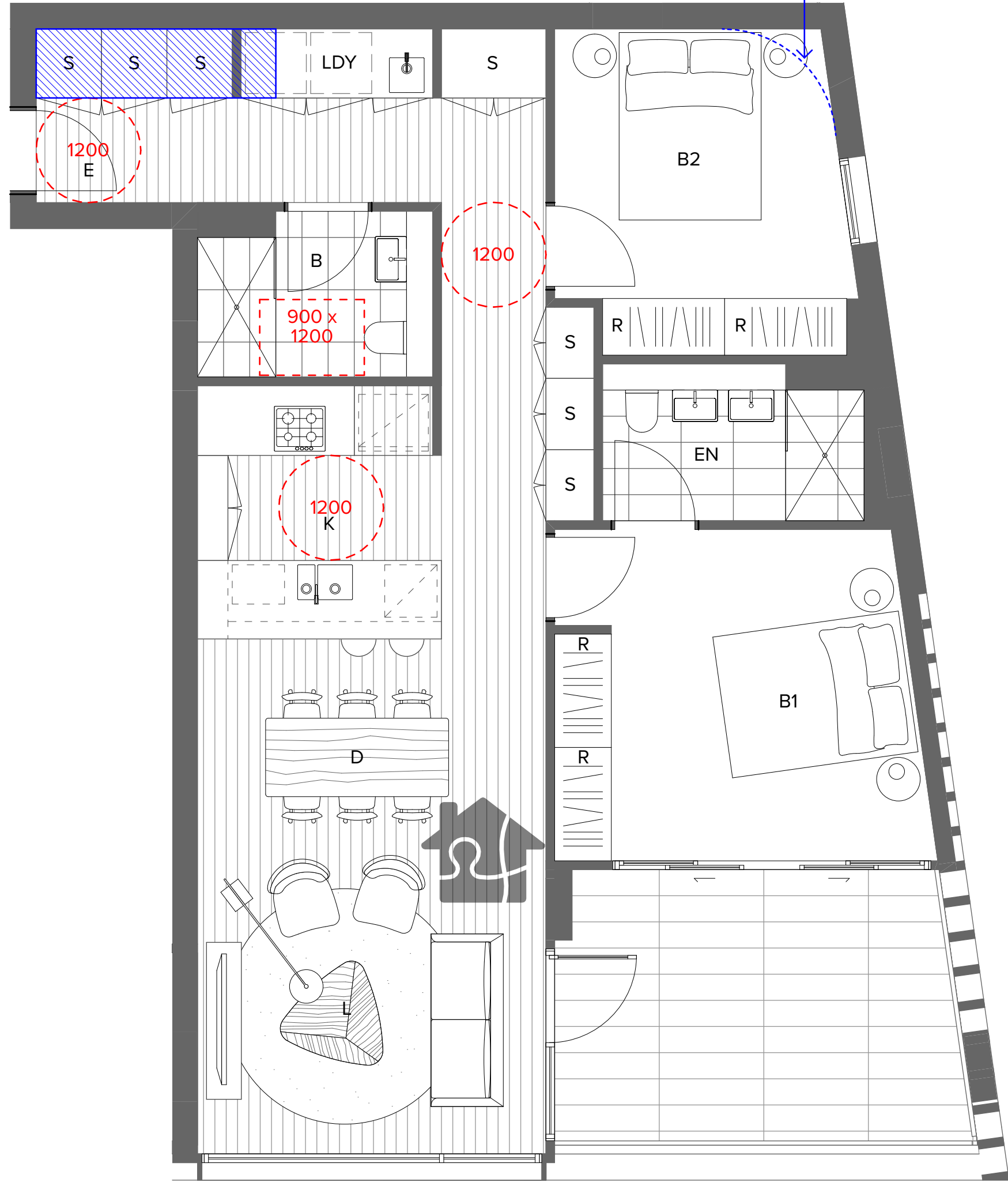


APT TYPE 'A': DASHED
ZONE PART OF
ADJACENT APARTMENT

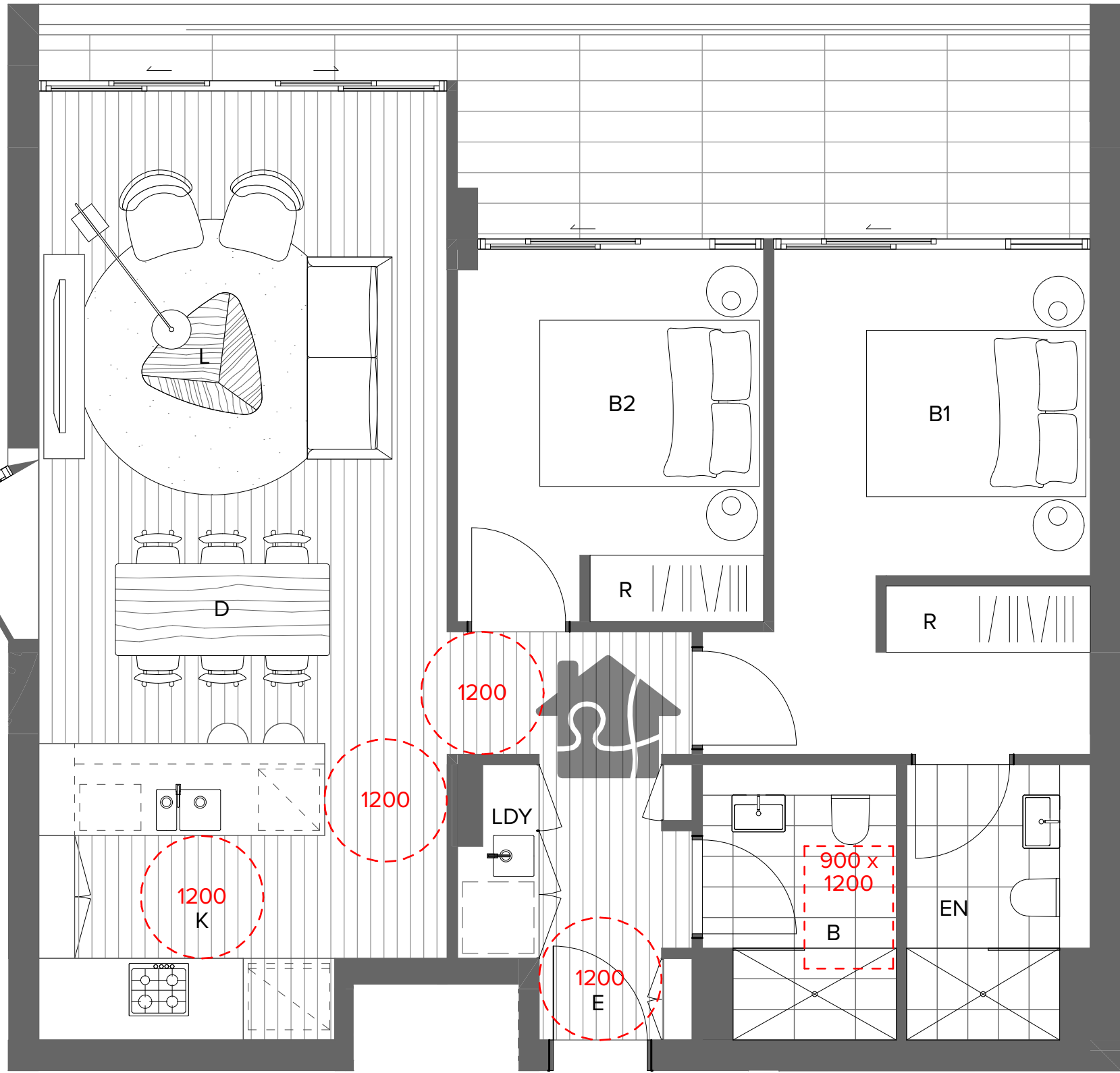
APT TYPE 'B': CURVED
WALL SHOWN DASHED



1 Livable Apartment - Type 01
1:50

TOTAL LIVABLE COUNT: 21

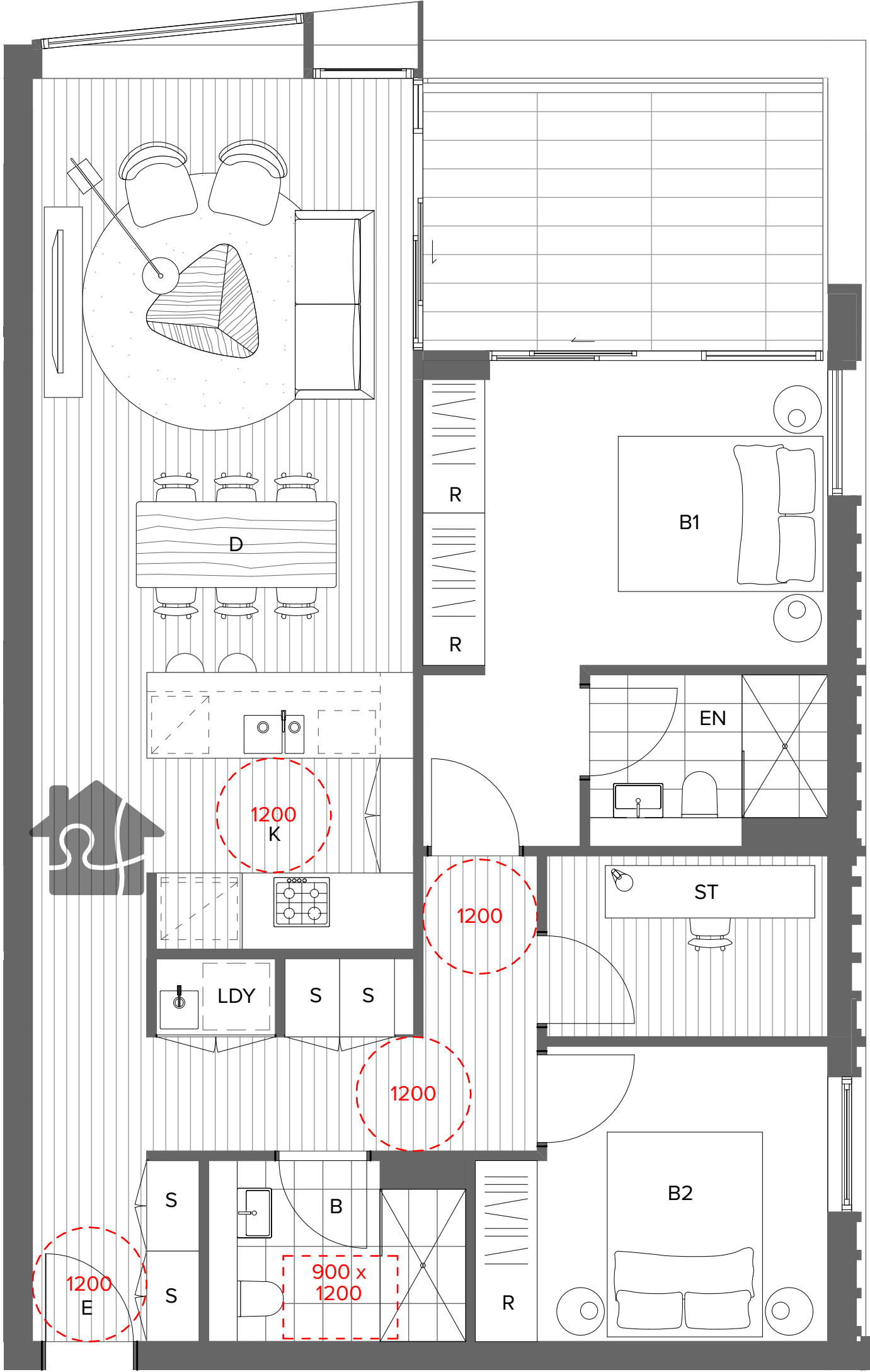
Total Stage 4: 8	Total Stage 5: 13
K.110 K.213 (*A) K.313 (*A) K.413	H.212 (*A) H.312 (*A) H.412
L.313 L.413 L.513 L.605	J.112 (*B) J.213 (*B) J.313 (*B) J.413 (*B) J.513 (*B) J.605 (*B) J.706 (*B) J.806 (*B) J.906 (*B) J.1006 (*B)



2 Livable Apartment - Type 02
1:50

TOTAL LIVABLE COUNT: 20

Total Stage 4: 10	Total Stage 5: 10
K.G04 K.105 K.205 K.305 K.405	H.G04 H.104 H.205 H.305 H.405
L.105 L.205 L.305 L.405 L.505	J.104 J.205 J.305 J.405 J.505



3 Livable Apartment - Type 03
1:50

TOTAL LIVABLE COUNT: 14

Total Stage 4: 4	Total Stage 5: 10
L.312 L.412 L.512 L.604	J.111 J.212 J.312 J.412 J.512 J.604 J.705 J.805 J.905 J.1005

SUMMARY TABLE

	Adaptable*	Livable*
Stage 4		
Building K	9	13
Building L	8	23
Total (157 Apts)	17	36
Stage 5		
Building H	9	12
Building J	9	30
Total (178 Apts)	18	42
St 4+5 Total (335 Apts)	35	78
Compliance Required:	10% (Penrith Council DCP)	20% (ADG)
Compliance Achieved:	✓	✓

GENERAL NOTES

Livable Units

- *Livable means silver level standard in Livable Housing Design Guidelines
- The GPO for the refrigerator shall be easily reachable when the refrigerator is in it's operating position
- Provide at least one double GPO at max. 300mm from front of work surface
- Wall reinforcement to be provided in accordance with Livable Housing Design Guidelines at pre-adaptation stage

Adaptable Units

- Wall reinforcement to be provided in accordance with AS4299-1995 Fig 4.5/4.6 at pre-adaptation stage

- [A]** Capped off plumbing services on wall or floor for future adaptable WC (post adaptation locations in compliance with AS 1482.1)
- [B]** Capped off plumbing services on wall or floor for future adaptable basin (post adaptation locations in compliance with AS 1482.1)
- [C]** Capped off plumbing services on wall or floor for future adaptable shower (post adaptation locations in compliance with AS 1482.1)
- [D]** Capped off plumbing services on wall or floor for future relocation of kitchen sink (post adaptation locations in compliance with AS 1482.1)
- [E]** Level finish to be provided

NOTES
THIS DRAWING IS COPYRIGHT © OF TURNER. NO REPRODUCTION WITHOUT PERMISSION. UNLESS NOTED OTHERWISE THIS DRAWING IS NOT FOR CONSTRUCTION. ALL DIMENSIONS AND LEVELS ARE TO BE CHECKED ON SITE PRIOR TO THE COMMENCEMENT OF WORK. INFORM TURNER OF ANY DISCREPANCIES FOR CLARIFICATION BEFORE PROCEEDING WITH WORK. DRAWINGS ARE NOT TO BE SCALED. USE ONLY FIGURED DIMENSIONS. REFER TO CONSULTANT DOCUMENTATION FOR FURTHER INFORMATION (DWG, PC AND BIM) FILES AND UNCONTROLLED DOCUMENTS AND ARE ISSUED FOR INFORMATION ONLY.

CLIENT
ESQ 1818 PANTHERS PTY LTD
Atlas Norwest Suite 502, Level 5 2-8
Brookhollow Avenue Baulkham Hills NSW
2153 Australia

DLCS Quality Endorsed Company ISO 9001:2015, Registration Number 20476
Notified Architect Nicholas Turner 6085, ABN 58 594 094 871

Project Title
ESQ Stage 4_5
Panthers North Precinct Penrith NSW 2750

Drawing Title
Adaptable Plan Layouts (DA Stage)
Livable / Adaptable Apartments

01 16.12.21 BF DA Submission
02 04.03.22 BF DA Submission
Rev Date Approved by Revision Notes

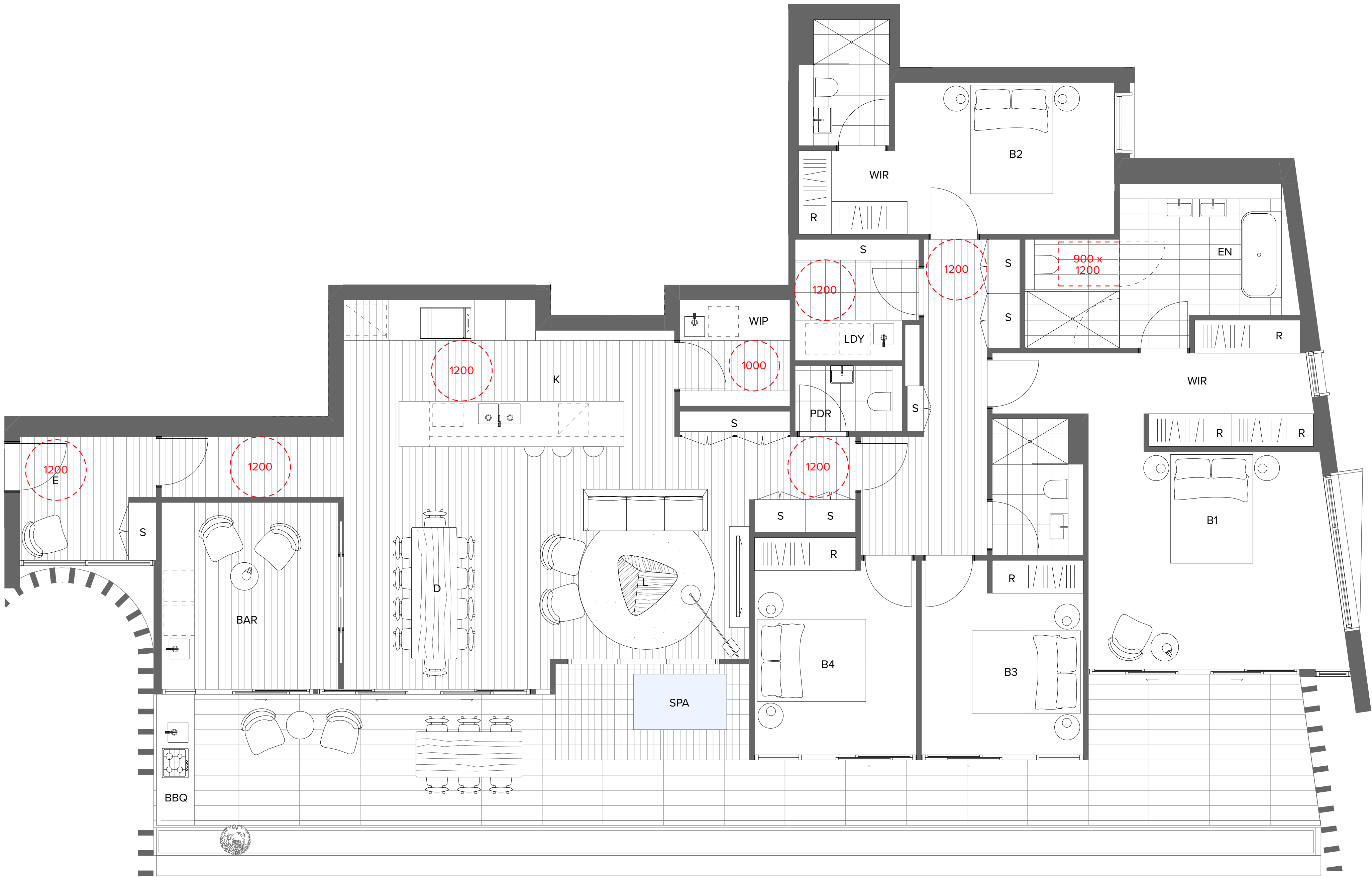
Project No. 14064.4
Dwg No. DA-810-001
Rev 02

Scale 1:50, 1:100 @A1, 50% @A3
For Information

Drawn by NMI/JC
Rev 02

TURNER

Level 7 ONE Oxford Street
Darlinghurst NSW 2010
AUSTRALIA
T +61 2 8668 0000
F +61 2 8668 0088
turner@turner.com.au



1 Livable Apartment - Type 04
1:50

TOTAL LIVABLE COUNT: 7

Total Stage 4: 7 Total Stage 5: 0

L.704
L.804
L.904
L.1004
L.1104
L.1204
L.1302

NOTES
THIS DRAWING IS COPYRIGHT © OF TURNER. NO REPRODUCTION WITHOUT PERMISSION. UNLESS NOTED OTHERWISE THIS DRAWING IS NOT FOR CONSTRUCTION. ALL DIMENSIONS AND LEVELS ARE TO BE CHECKED ON SITE PRIOR TO THE COMMENCEMENT OF WORK. INFORM TURNER OF ANY DISCREPANCIES FOR CLARIFICATION BEFORE PROCEEDING WITH WORK. DRAWINGS ARE NOT TO BE SCALED. USE ONLY FIGURED DIMENSIONS. REFER TO CONSULTANT DOCUMENTATION FOR FURTHER INFORMATION (DWG, PC AND BIM) FILES AND UNCONTROLLED DOCUMENTS AND ARE ISSUED FOR INFORMATION ONLY.

CLIENT
ESQ 1818 PANTHERS PTY LTD
Atlas Norwest Suite 502, Level 5 2-8
Brookhollow Avenue Baulkham Hills NSW
2153 Australia

DLCS Quality Endorsed Company ISO 9001:2015, Registration Number 20476
Notwithstanding And/Incl. Nicholas Turner 6055, ABN 58 594 394 871

Project Title
ESQ Stage 4_5
Panthers North Precinct Penrith NSW 2750
Drawing Title
Adaptable Plan Layouts (DA Stage)
Livable / Adaptable Apartments

01	16.12.21	BF	DA Submission
02	04.03.22	BF	DA Submission
Rev	Date	Approved by	Revision Notes

Project No. **14064.4**
Dwg No. **DA-810-002**
Rev **02**

Scale
1:50, 1:100 @A1, 50% @A3
For Information

Drawn by **NMI/JC**
Rev **02**

North

TURNER

Level 7 ONE Oxford Street
Sydney NSW 2010
AUSTRALIA

T +61 2 8668 0000
F +61 2 8668 0088
turner@turner.com.au

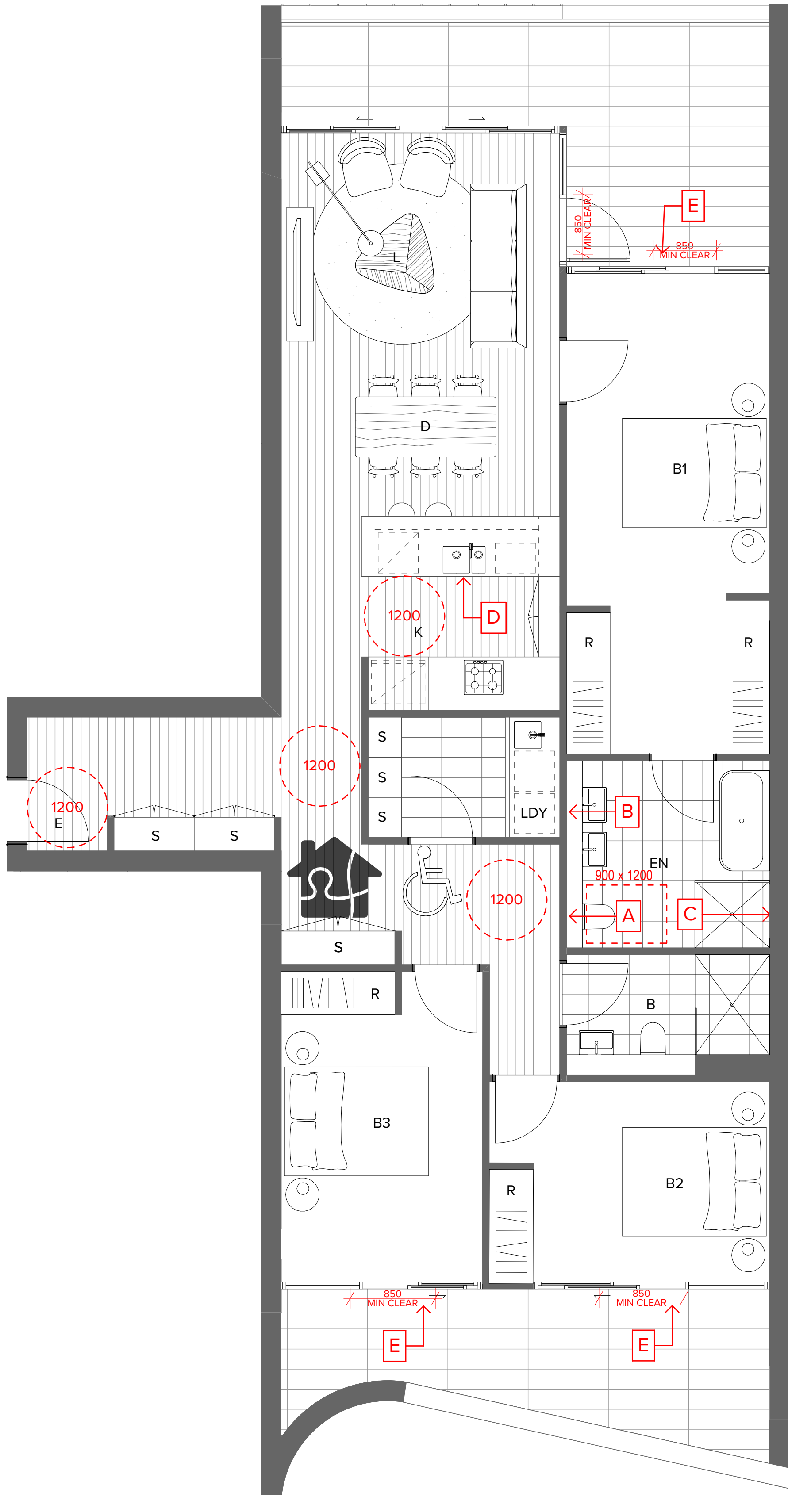
GENERAL NOTES

Livable Units

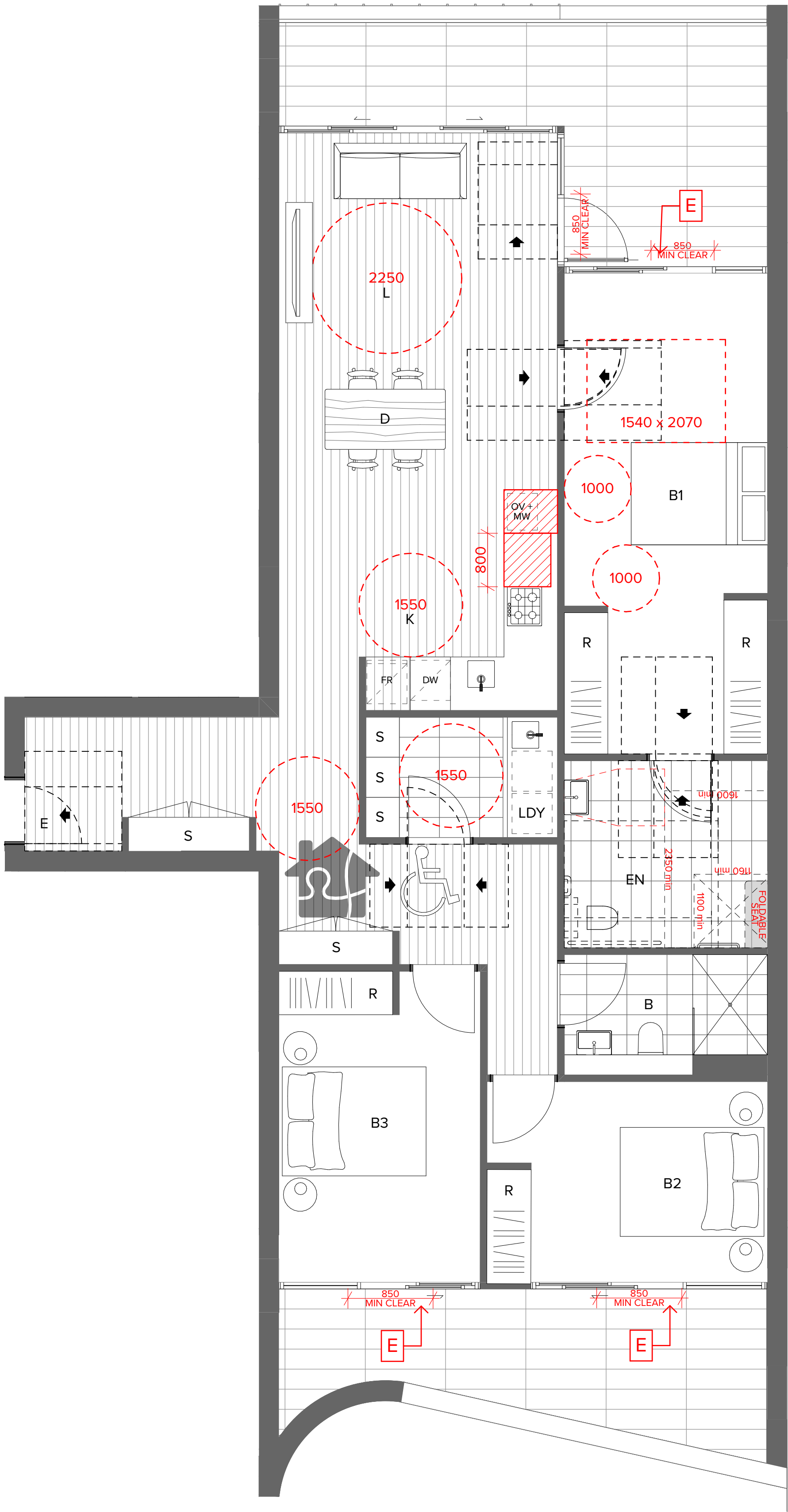
- *Livable means silver level standard in Livable Housing Design Guidelines
- The GPO for the refrigerator shall be easily reachable when the refrigerator is in it's operating position
- Provide at least one double GPO at max. 300mm from front of work surface
- Wall reinforcement to be provided in accordance with Livable Housing Design Guidelines at pre-adaptation stage

Adaptable Units

- Wall reinforcement to be provided in accordance with AS4299-1995 Fig 4.5/4.6 at pre-adaptation stage
- [A]** Capped off plumbing services on wall or floor for future adaptable WC (post adaptation locations in compliance with AS 1482.1)
- [B]** Capped off plumbing services on wall or floor for future adaptable basin (post adaptation locations in compliance with AS 1482.1)
- [C]** Capped off plumbing services on wall or floor for future adaptable shower (post adaptation locations in compliance with AS 1482.1)
- [D]** Capped off plumbing services on wall or floor for future relocation of kitchen sink (post adaptation locations in compliance with AS 1482.1)
- [E]** Level finish to be provided



1 Livable/Adaptable Pre-adaptation Plan - Type 01
1:50



2 Livable/Adaptable Post-adaptation Plan - Type 01
1:50

TOTAL LIVABLE COUNT: 3

Total Stage 4: 3

K.106
K.206
K.306

TOTAL ADAPTABLE COUNT: 3

Total Stage 4: 3

K.106
K.206
K.306

GENERAL NOTES

Livable Units

- *Livable means silver level standard in Livable Housing Design Guidelines
- The GPO for the refrigerator shall be easily reachable when the refrigerator is in it's operating position
- Provide at least one double GPO at max. 300mm from front of work surface
- Wall reinforcement to be provided in accordance with Livable Housing Design Guidelines at pre-adaptation stage

Adaptable Units

- Wall reinforcement to be provided in accordance with AS4299-1995 Fig 4.5/4.6 at pre-adaptation stage
- [A] Capped off plumbing services on wall or floor for future adaptable WC (post adaptation locations in compliance with AS 1482.1)
- [B] Capped off plumbing services on wall or floor for future adaptable basin (post adaptation locations in compliance with AS 1482.1)
- [C] Capped off plumbing services on wall or floor for future adaptable shower (post adaptation locations in compliance with AS 1482.1)
- [D] Capped off plumbing services on wall or floor for future relocation of kitchen sink (post adaptation locations in compliance with AS 1482.1)
- [E] Level finish to be provided

NOTES
THIS DRAWING IS COPYRIGHT © OF TURNER. NO REPRODUCTION WITHOUT PERMISSION. UNLESS NOTED OTHERWISE THIS DRAWING IS NOT FOR CONSTRUCTION. ALL DIMENSIONS AND LEVELS ARE TO BE CHECKED ON SITE PRIOR TO THE COMMENCEMENT OF WORK. INQUIRE TURNER OF ANY DISCREPANCIES FOR CLARIFICATION BEFORE PROCEEDING WITH WORK. DRAWINGS ARE NOT TO BE SCALED. USE ONLY FIGURED DIMENSIONS. REFER TO CONSULTANT DOCUMENTATION FOR FURTHER INFORMATION. DWG, PC AND BIM FILES ARE UNCONTROLLED DOCUMENTS AND ARE ISSUED FOR INFORMATION ONLY.

CLIENT
ESQ 1818 PANTHERS PTY LTD
Atlas Norwest Suite 502, Level 5 2-8
Brookhollow Avenue Baulkham Hills NSW
2153 Australia

DLCS Quality Endorsed Company ISO 9001:2015, Registration Number 20476
Notwithstanding to whomsoever, Turner 1818, APR 98 304 304 811

Project Title
ESQ Stage 4_5
Panthers North Precinct Penrith NSW 2750
Drawing Title
Adaptable Plan Layouts (DA Stage)
Livable / Adaptable Apartments

01	16.12.21	BF	DA Submission	Project No.	14064.4	Drawn by	NMI/JC	North
02	04.03.22	BF	DA Submission	Dwg No.	DA-810-003	Rev	02	
Rev	Date	Approved by	Revision Notes					

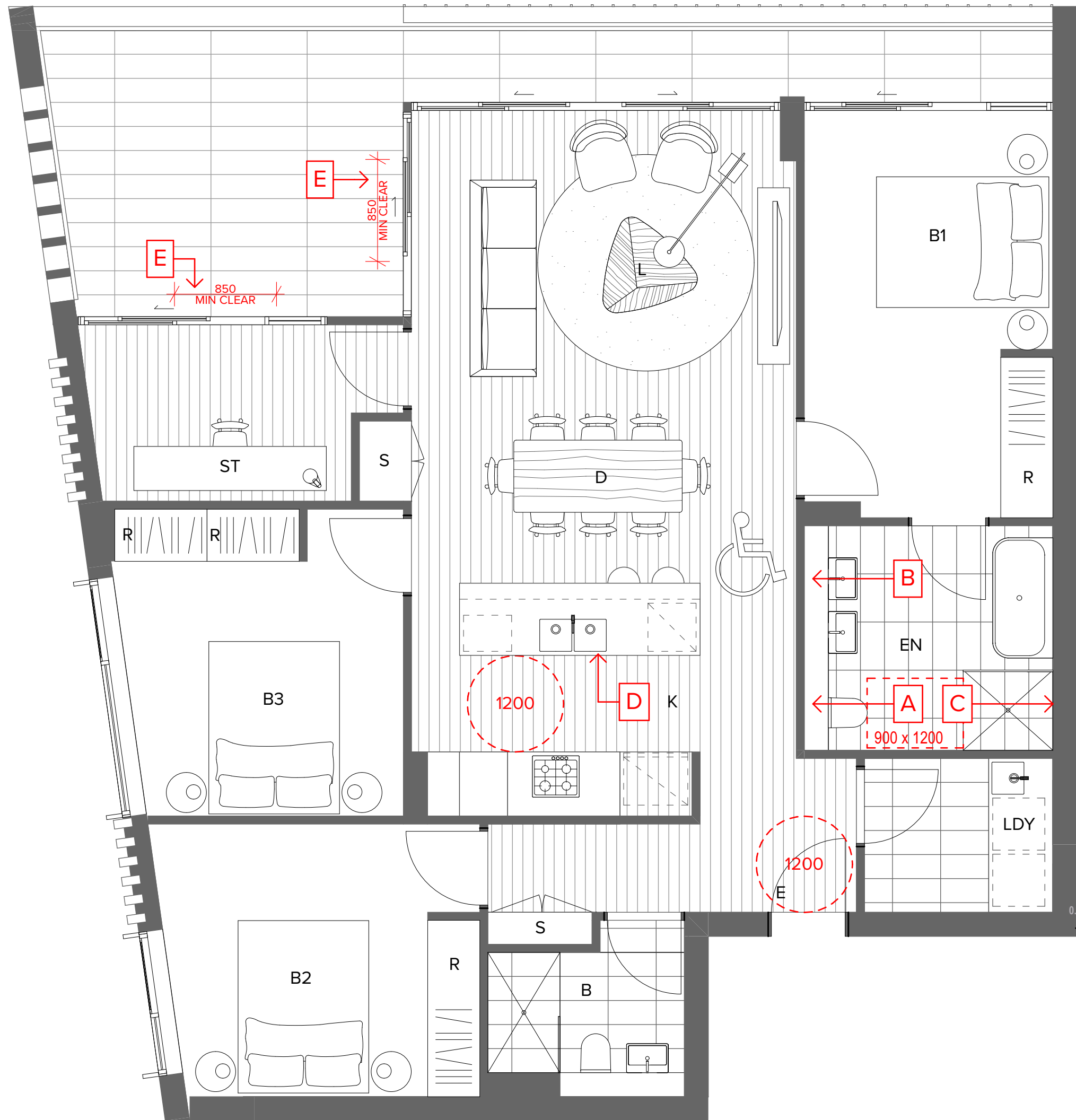
Scale
1:50, 1:100 @A1, 50% @A3
For Information

TURNER

Level 7 ONE Oxford Street
Darlinghurst NSW 2010
AUSTRALIA
T +61 2 8668 0000
F +61 2 8668 0088
turner@turner.com.au



Level 7 **ONE** Oxford Street
Darlinghurst NSW 2010
AUSTRALIA



1 Liveable/Adaptable Pre-adaptation Plan - Type 04
1:50



2 Liveable/Adaptable Post-adaptation Plan - Type 04
1:50

TOTAL COUNT: 15

Total Stage 4: 10 Total Stage 5: 5

K.G02 H.G02
K.103 H.102
K.203 H.203
K.303 H.303
K.403 H.403

L.103
L.203
L.303
L.403
L.503

GENERAL NOTES

Livable Units

- *Livable means silver level standard in Livable Housing Design Guidelines
- The GPO for the refrigerator shall be easily reachable when the refrigerator is in its operating position
- Provide at least one double GPO at max. 300mm from front of work surface
- Wall reinforcement to be provided in accordance with Livable Housing Design Guidelines at pre-adaptation stage

Adaptable Units

- Wall reinforcement to be provided in accordance with AS4299-1995 Fig 4.5/4.6 at pre-adaptation stage

- A** Capped off plumbing services on wall or floor for future adaptable WC (post adaptation locations in compliance with AS 1482.1)
- B** Capped off plumbing services on wall or floor for future adaptable basin (post adaptation locations in compliance with AS 1482.1)
- C** Capped off plumbing services on wall or floor for future adaptable shower (post adaptation locations in compliance with AS 1482.1)
- D** Capped off plumbing services on wall or floor for future relocation of kitchen sink (post adaptation locations in compliance with AS 1482.1)
- E** Level finish to be provided

NOTES
THIS DRAWING IS COPYRIGHT © OF TURNER. NO REPRODUCTION WITHOUT PERMISSION. UNLESS NOTED OTHERWISE THIS DRAWING IS NOT FOR CONSTRUCTION. ALL DIMENSIONS AND LEVELS ARE TO BE CHECKED ON SITE PRIOR TO THE COMMENCEMENT OF WORK. INFORM TURNER OF ANY DISCREPANCIES FOR CLARIFICATION BEFORE PROCEEDING WITH WORK. DRAWINGS ARE NOT TO BE SCALED. USE ONLY FIGURED DIMENSIONS. REFER TO CONSULTANT DOCUMENTATION FOR FURTHER INFORMATION (DWG, IFC AND BIM FILES ARE UNCONTROLLED DOCUMENTS AND ARE ISSUED FOR INFORMATION ONLY).

CLIENT
ESQ 1818 PANTHERS PTY LTD
Atlas Norwest Suite 502, Level 5 2-8
Brookhollow Avenue Baulkham Hills NSW
2153 Australia

DLCS Quality Endorsed Company ISO 9001:2015, Registration Number 20476
Turnerwater Architect Nicholas Turner 0800 489 98 98/04 984 971

Project Title
ESQ Stage 4_5
Panthers North Precinct Penrith NSW 2750
Drawing Title
Adaptable Plan Layouts (DA Stage)
Livable / Adaptable Apartments

01 16.12.21 BF DA Submission
02 04.03.22 BF DA Submission
Rev Date Approved by Revision Notes

Scale
1:50, 1:100 @A1, 50% @A3

Project No.
14064.4

Dwg No.
DA-810-005

For Information

Drawn by
NMI/JC

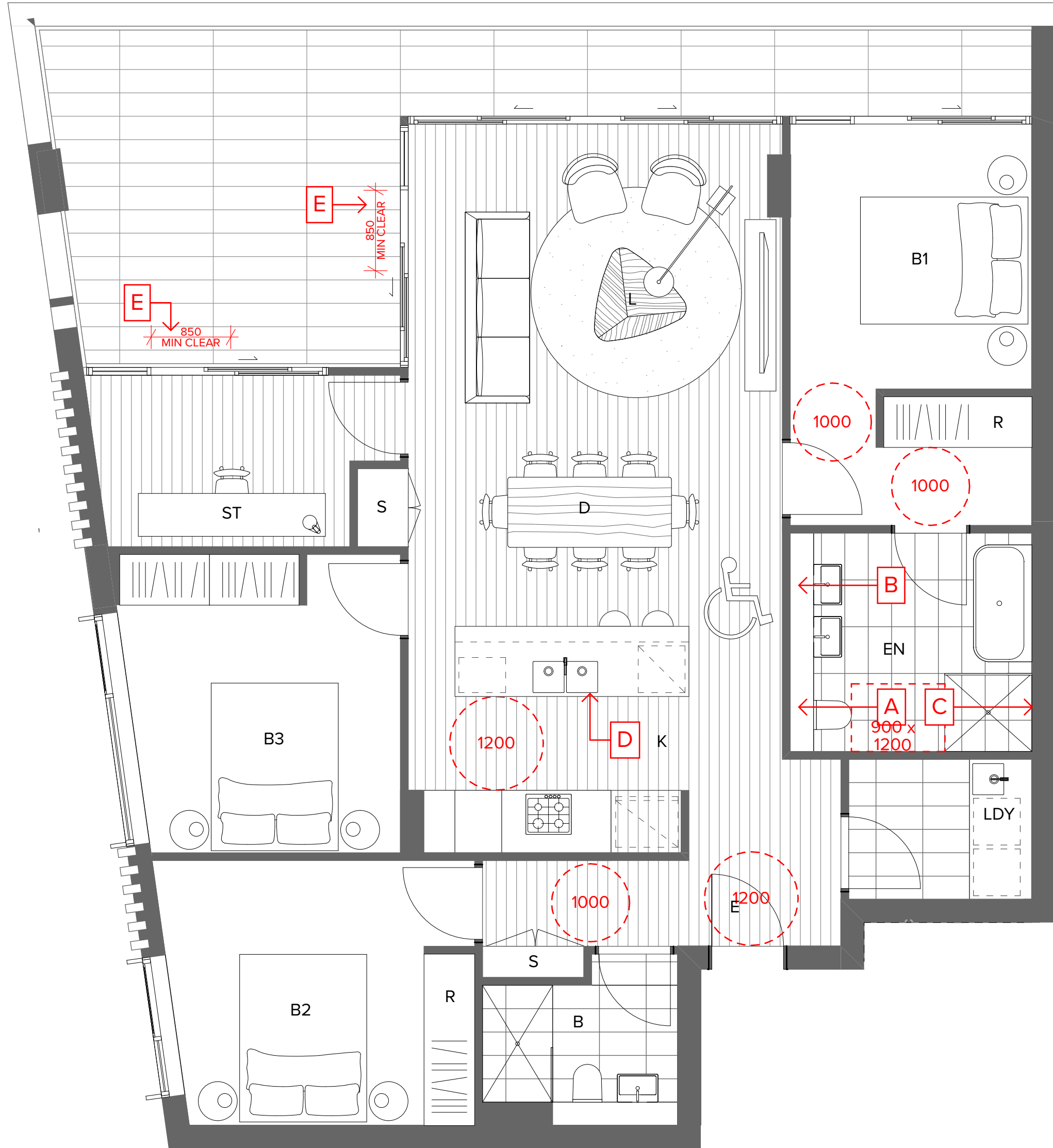
Rev
02

North

TURNER

Level 7 ONE Oxford Street
Sydney NSW 2010
AUSTRALIA

T +61 2 8668 0000
F +61 2 8668 0088
turnerwater.com.au



1 Liveable/Adaptable Pre-adaptation Plan - Type 05
1:50



2 Livable/Adaptable Post-adaptation Plan - Type 05
1:50

TOTAL COUNT: 4	
Total Stage 4: -	Total Stage 5: 4
	J.203
	J.303
	J.403
	J.503

GENERAL NOTES

Livable Units

- *Livable means silver level standard in Livable Housing Design Guidelines
- The GPO for the refrigerator shall be easily reachable when the refrigerator is in it's operating position
- Provide at least one double GPO at max. 300mm from front of work surface
- Wall reinforcement to be provided in accordance with Livable Housing Design Guidelines at pre-adaptation stage

Adaptable Units

- Wall reinforcement to be provided in accordance with AS4299-1995 Fig 4.5/4.6 at pre-adaptation stage

- A** Capped off plumbing services on wall or floor for future adaptable WC (post adaptation locations in compliance with AS 1482.1)
- B** Capped off plumbing services on wall or floor for future adaptable basin (post adaptation locations in compliance with AS 1482.1)
- C** Capped off plumbing services on wall or floor for future adaptable shower (post adaptation locations in compliance with AS 1482.1)
- D** Capped off plumbing services on wall or floor for future relocation of kitchen sink (post adaptation locations in compliance with AS 1482.1)
- E** Level finish to be provided

NOTES
THIS DRAWING IS COPYRIGHT © OF TURNER. NO REPRODUCTION WITHOUT PERMISSION. UNLESS NOTED OTHERWISE THIS DRAWING IS NOT FOR CONSTRUCTION. ALL DIMENSIONS AND LEVELS ARE TO BE CHECKED ON SITE PRIOR TO THE COMMENCEMENT OF WORK. INFORM TURNER OF ANY DISCREPANCIES FOR CLARIFICATION BEFORE PROCEEDING WITH WORK. DRAWINGS ARE NOT TO BE SCALED. USE ONLY FIGURED DIMENSIONS. REFER TO CONSULTANT DOCUMENTATION FOR FURTHER INFORMATION (DWG, IFC AND BIM) FILES AND UNCONTROLLED DOCUMENTS AND ARE ISSUED FOR INFORMATION ONLY.

CLIENT
ESQ 1818 PANTHERS PTY LTD
Atlas Norwest Suite 502, Level 5 2-8
Brookhollow Avenue Baulkham Hills NSW
2153 Australia

DLCS Quality Endorsed Company ISO 9001:2015, Registration Number 20476
Turnerwater Architect Nicholas Turner 0895 4894 994/994 911

Project Title
ESQ Stage 4_5
Panthers North Precinct Penrith NSW 2750
Drawing Title
Adaptable Plan Layouts (DA Stage)
Livable / Adaptable Apartments

01 16.12.21 BF DA Submission
02 04.03.22 BF DA Submission
Rev Date Approved by Revision Notes

Project No. 14064.4
Dwg No. DA-810-006
Rev 02

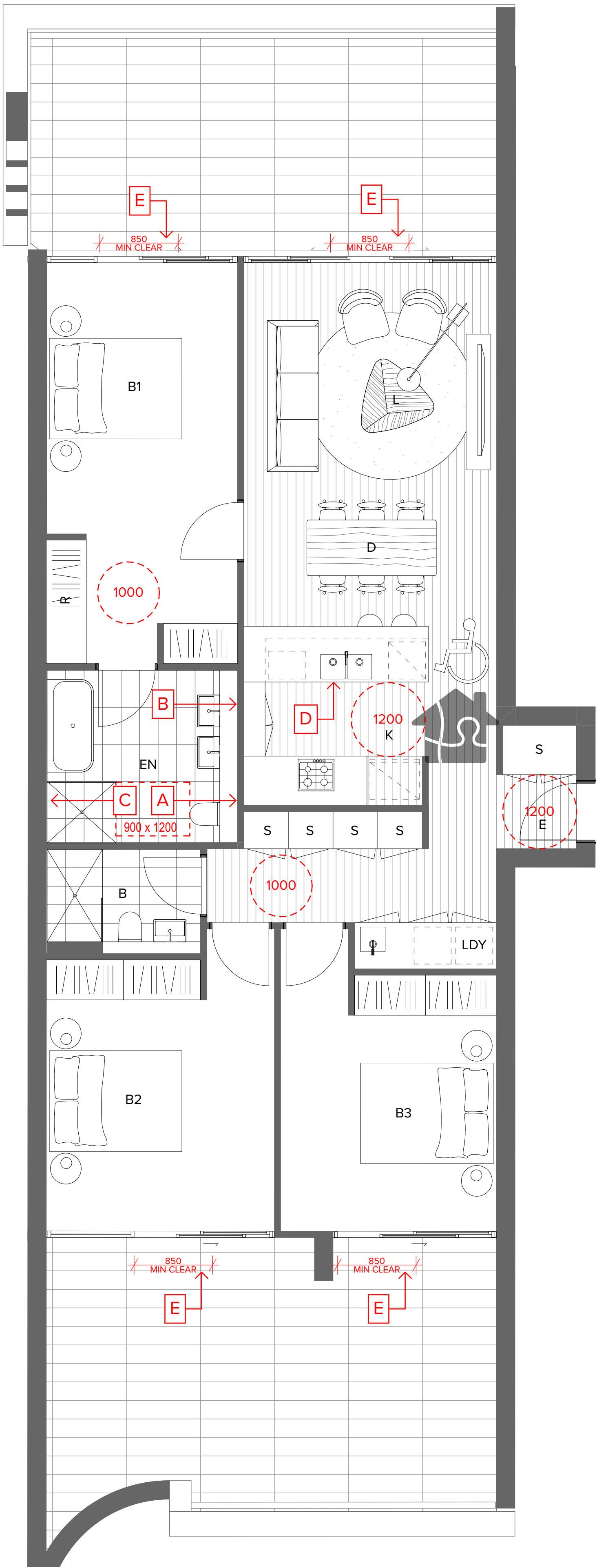
Scale 1:50, 1:100 @A1, 50% @A3
For Information

Drawn by NMI/JC
North

Level 7 ONE Oxford Street
Darlinghurst NSW 2010
AUSTRALIA

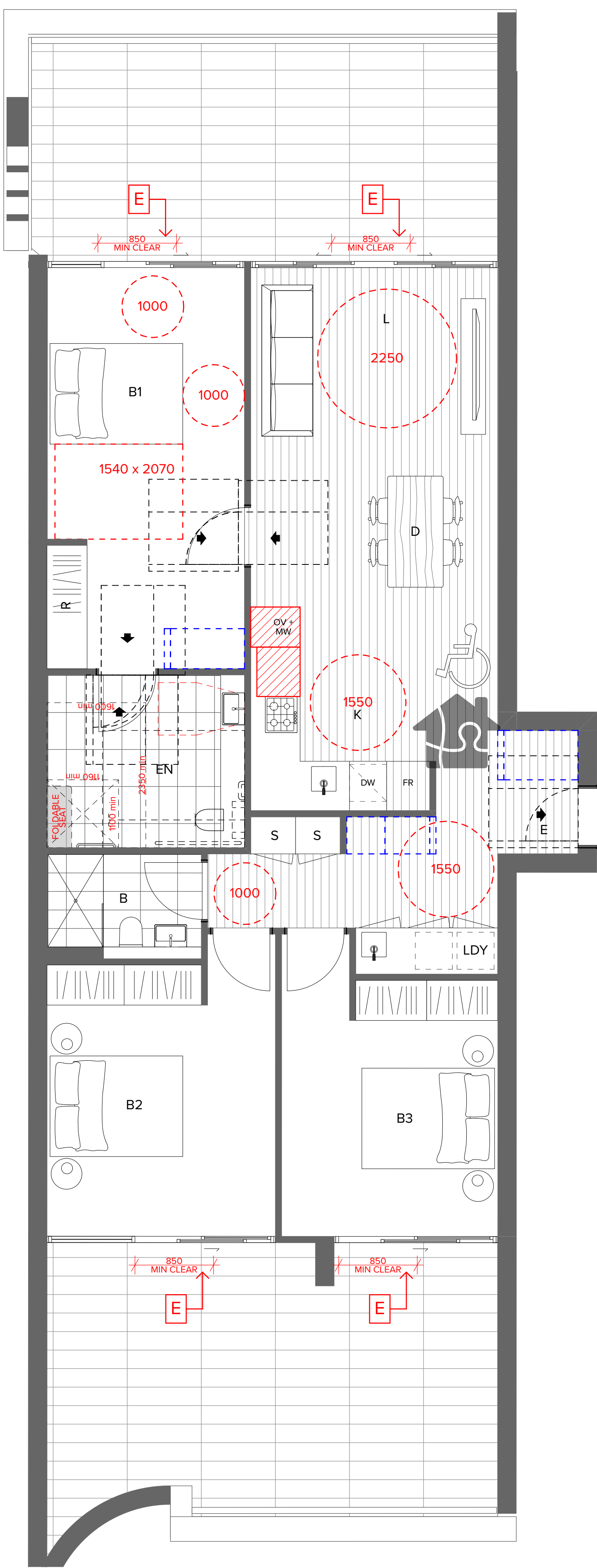
T +61 2 8668 0000
F +61 2 8668 0088
turnerwater.com.au

TURNER



2 Liveable/Adaptable Pre-adaptation Plan- Type 03
1:50

CLIENT
ESQ 1818 PANTHERS PTY LTD
Atlas Norwest Suite 502, Level 5 2-8
Brookhollow Avenue Baulkham Hills NSW
2153 Australia



2 Liveable/Adaptable Post-adaptation Plan- Type 03
1:50

TOTAL LIVABLE COUNT: 5

Total Stage 5: 5

J.108
J.209
J.309
J.409
J.509

TOTAL ADAPTABLE COUNT: 5

Total Stage 5: 5

J.108
J.209
J.309
J.409
J.509

GENERAL NOTES

Livable Units

- *Livable means silver level standard in Livable Housing Design Guidelines
- The GPO for the refrigerator shall be easily reachable when the refrigerator is in its operating position
- Provide at least one double GPO at max. 300mm from front of work surface
- Wall reinforcement to be provided in accordance with Livable Housing Design Guidelines at pre-adaptation stage

Adaptable Units

- Wall reinforcement to be provided in accordance with AS4299-1995 Fig 4.5/4.6 at pre-adaptation stage

- [A]** Capped off plumbing services on wall or floor for future adaptable WC (post adaptation locations in compliance with AS 1482.1)
- [B]** Capped off plumbing services on wall or floor for future adaptable basin (post adaptation locations in compliance with AS 1482.1)
- [C]** Capped off plumbing services on wall or floor for future adaptable shower (post adaptation locations in compliance with AS 1482.1)
- [D]** Capped off plumbing services on wall or floor for future relocation of kitchen sink (post adaptation locations in compliance with AS 1482.1)
- [E]** Level finish to be provided

NOTES
THIS DRAWING IS COPYRIGHT © OF TURNER. NO REPRODUCTION WITHOUT PERMISSION. UNLESS NOTED OTHERWISE THIS DRAWING IS NOT FOR CONSTRUCTION. ALL DIMENSIONS AND LEVELS ARE TO BE CHECKED ON SITE PRIOR TO THE COMMENCEMENT OF WORK. INQUIRE TURNER OF ANY DISCREPANCIES FOR CLARIFICATION BEFORE PROCEEDING WITH WORK. DRAWINGS ARE NOT TO BE SCALED. USE ONLY FIGURED DIMENSIONS. REFER TO CONSULTANT DOCUMENTATION FOR FURTHER INFORMATION. DWG, PC AND BIM FILES ARE UNCONTROLLED DOCUMENTS AND ARE ISSUED FOR INFORMATION ONLY.

DLCS Quality Endorsed Company ISO 9001:2015, Registration Number 20476
Notwithstanding to Nicholas Turner 6885, 6896-96 964-964 971

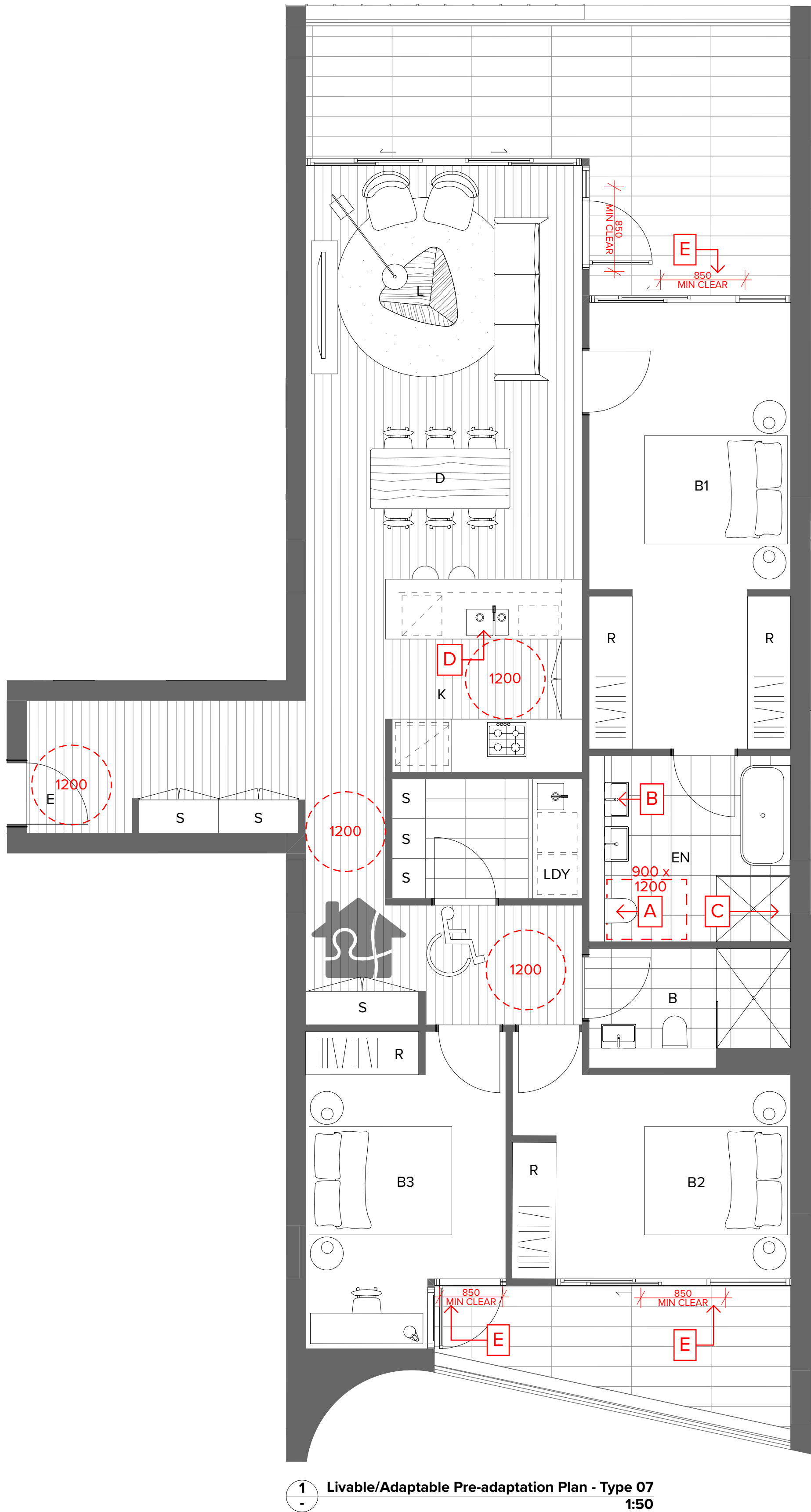
Project Title
ESQ Stage 4_5
Panthers North Precinct Penrith NSW 2750

Drawing Title
Adaptable Plan Layouts (DA Stage)
Livable / Adaptable Apartments

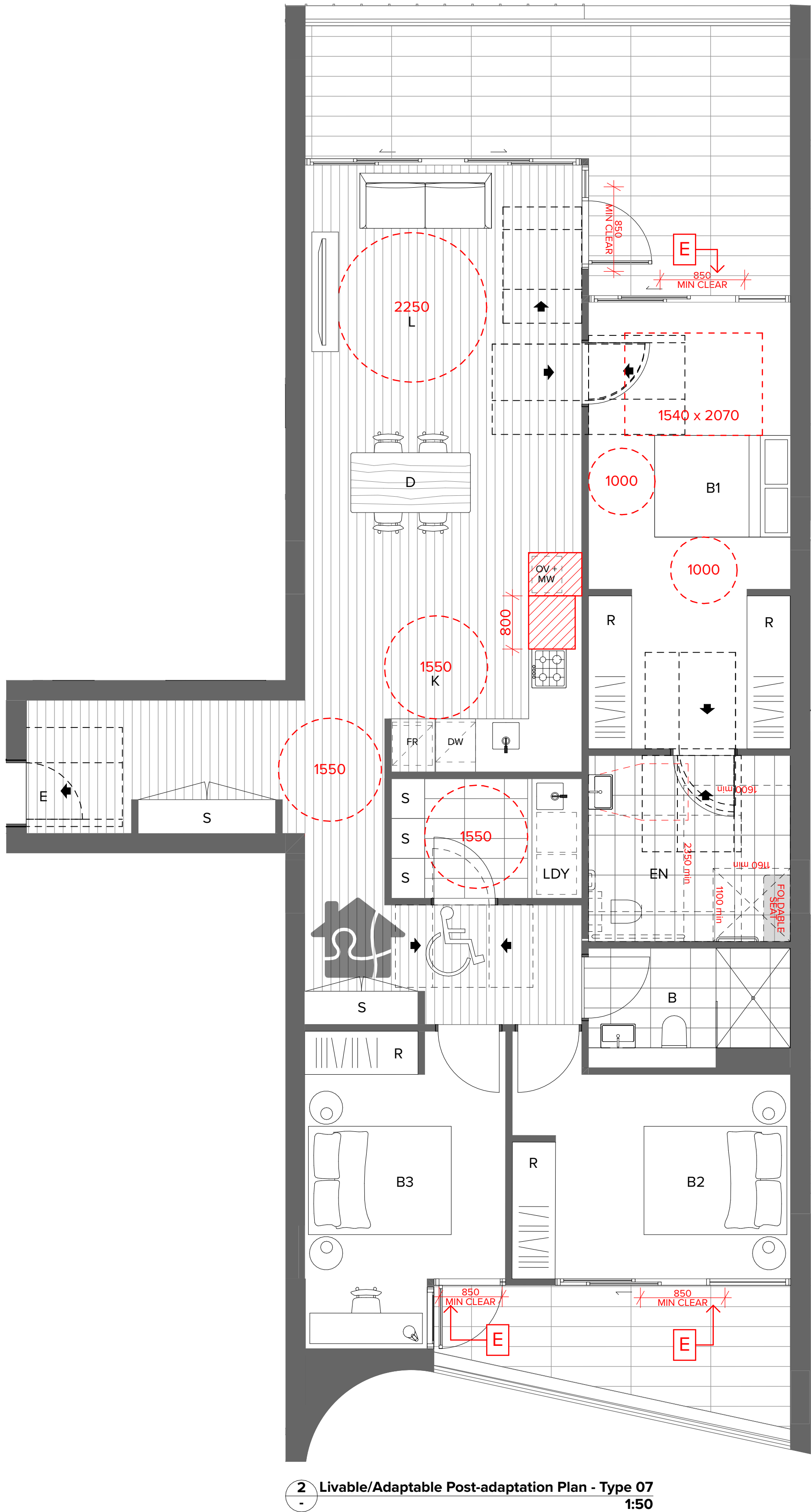
Rev	Date	Approved by	Revision Notes	Project No.	Drawn by	North
01	04.03.22	BF	DA Submission			
Scale	1:100, 1:50 @A1, 50% @A3			14064.4	NMI/JC	
Status	For Information			Dwg No. DA-810-008	Rev 01	

TURNER

Level 7 ONE Oxford Street
Sydney NSW 2010
AUSTRALIA
T +61 2 8568 0000
F +61 2 8568 0088
turner@tdo.com.au



1 Livable/Adaptable Pre-adaptation Plan - Type 07
1:50



2 Livable/Adaptable Post-adaptation Plan - Type 07
1:50

TOTAL LIVABLE COUNT: 4	
	Total Stage 5: 4
	H.105
	H.206
	H.306
	H.406

TOTAL ADAPTABLE COUNT: 4	
	Total Stage 5: 4
	H.105
	H.206
	H.306
	H.406

GENERAL NOTES

Livable Units

- *Livable means silver level standard in Livable Housing Design Guidelines
- The GPO for the refrigerator shall be easily reachable when the refrigerator is in it's operating position
- Provide at least one double GPO at max. 300mm from front of work surface
- Wall reinforcement to be provided in accordance with Livable Housing Design Guidelines at pre-adaptation stage

Adaptable Units

- Wall reinforcement to be provided in accordance with AS4299-1995 Fig 4.5/4.6 at pre-adaptation stage

- A** Capped off plumbing services on wall or floor for future adaptable WC (post adaptation locations in compliance with AS 1482.1)
- B** Capped off plumbing services on wall or floor for future adaptable basin (post adaptation locations in compliance with AS 1482.1)
- C** Capped off plumbing services on wall or floor for future adaptable shower (post adaptation locations in compliance with AS 1482.1)
- D** Capped off plumbing services on wall or floor for future relocation of kitchen sink (post adaptation locations in compliance with AS 1482.1)
- E** Level finish to be provided

NOTES
THIS DRAWING IS COPYRIGHT © OF TURNER. NO REPRODUCTION WITHOUT PERMISSION. UNLESS NOTED OTHERWISE THIS DRAWING IS NOT FOR CONSTRUCTION. ALL DIMENSIONS AND LEVELS ARE TO BE CHECKED ON SITE PRIOR TO THE COMMENCEMENT OF WORK. INFORM TURNER OF ANY DISCREPANCIES FOR CLARIFICATION BEFORE PROCEEDING WITH WORK. DRAWINGS ARE NOT TO BE SCALED. USE ONLY FIGURED DIMENSIONS. REFER TO CONSULTANT DOCUMENTATION FOR FURTHER INFORMATION. DWG, PC AND BIM FILES ARE UNCONTROLLED DOCUMENTS AND ARE ISSUED FOR INFORMATION ONLY.

CLIENT
ESQ 1818 PANTHERS PTY LTD
Atlas Norwest Suite 502, Level 5 2-8
Brookholow Avenue Baulkham Hills NSW
2153 Australia

DLCS Quality Endorsed Company ISO 9001:2015, Registration Number 20476
Notwithstanding to Nicholas Turner 6055, 48th St 9th Floor 911

Project Title
ESQ Stage 4_5
Panthers North Precinct Penrith NSW 2750

Drawing Title
Adaptable Plan Layouts (DA Stage)
Livable / Adaptable Apartments

Rev	Date	Approved by	Revision Notes	Project No.	14064.4	Drawn by	NMJ/C	North
Scale	1:100, 1:50 @A1, 50% @A3			Dwg No.	DA-810-009	Rev		
Status	For Information							

TURNER

Level 7 ONE Oxford Street
Sydney NSW 2010
AUSTRALIA
T +61 2 8668 0000
F +61 2 8668 0088
turner@turner.com.au